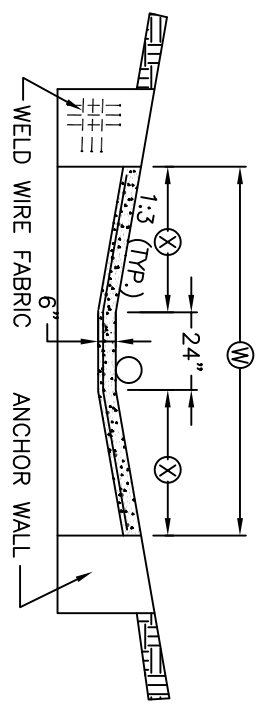
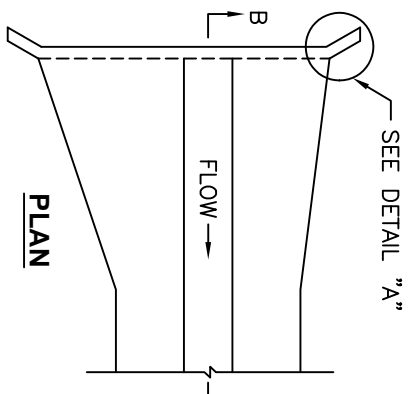


STANDARD DESIGN PAVED DITCH TYPE A

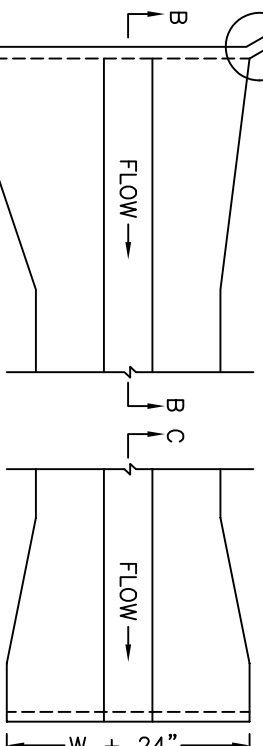


ELEVATION
* = \otimes + 6" EARTH SLOPE

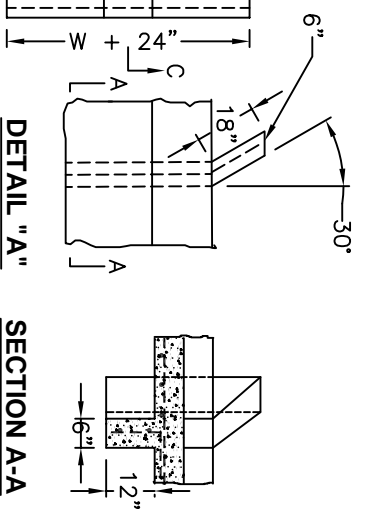
TOP OF ANCHOR WALL SHALL CONFORM TO THE SLOPE OF THE EARTH (TYP.).



PLAN

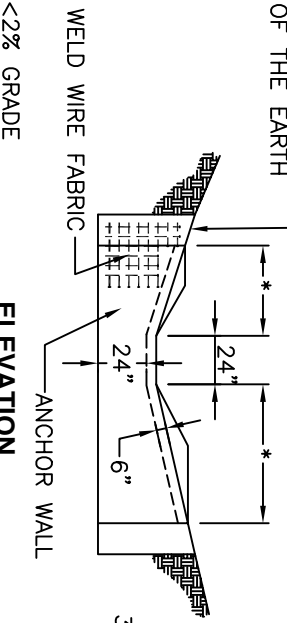


PLAN

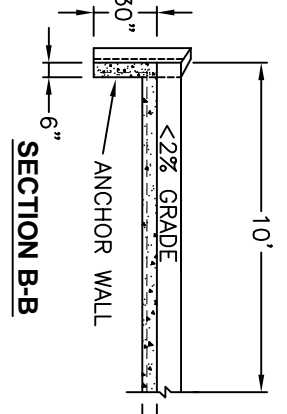


DETAIL "A-A"

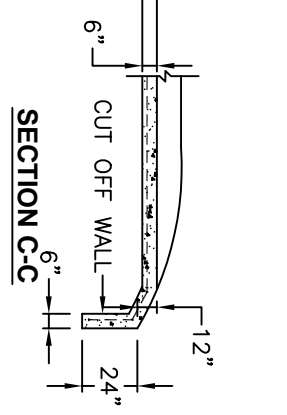
SECTION A-A



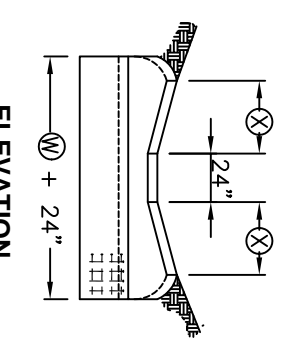
ELEVATION



SECTION B-B

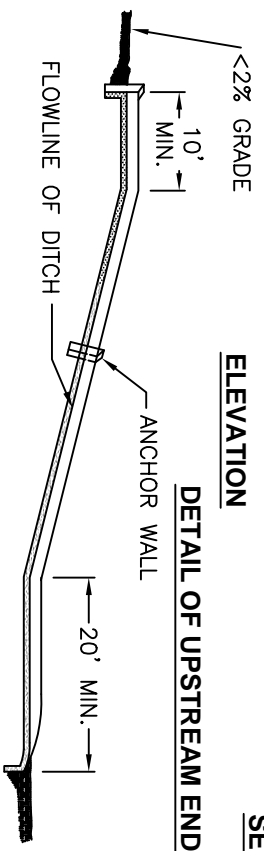


SECTION C-C



ELEVATION

DETAIL OF DOWNSTREAM END



DETAIL OF UPSTREAM END

LOCATION AND LIMITS OF PAVED DITCH

| TYPE | ① | ② | ③ |
|------|-----|--------|-------|
| A-6 | 6" | 5'-0" | 1'-6" |
| A-9 | 9" | 6'-6" | 2'-3" |
| A-12 | 12" | 8'-0" | 3'-0" |
| A-15 | 15" | 9'-6" | 3'-9" |
| A-18 | 18" | 11'-0" | 4'-6" |
| A-21 | 21" | 12'-6" | 5'-3" |
| A-24 | 24" | 14'-0" | 6'-0" |

NOTES:

1. CLASS "SI" CONCRETE SHALL BE USED THROUGHOUT.
2. ANCHOR WALL SHALL BE SPACED AT NOT MORE THAN 50 FOOT INTERVALS.
3. ANCHOR WALLS AND CUT-OFF WALL SHALL BE CONSTRUCTED MONOLITHICALLY WITH THE PAVED DITCH.
4. WELDED WIRE FABRIC SHALL BE 6"x6" MESH, #4 GAGE, 58 LBS. PER 100 SQ. FT. CONFORMING TO THE REQUIREMENTS OF AASHTO M-55.

CITY OF DECATUR, ILLINOIS
DEPARTMENT OF ENGINEERING
INFRASTRUCTURE

ISSUED: 7-3-78
REVISIONS BY DATE
JMM 11/5/02

ADOPTED JANUARY 1, 2003
DIRECTOR OF ENGINEERING & INFRASTRUCTURE

STANDARD # 3300