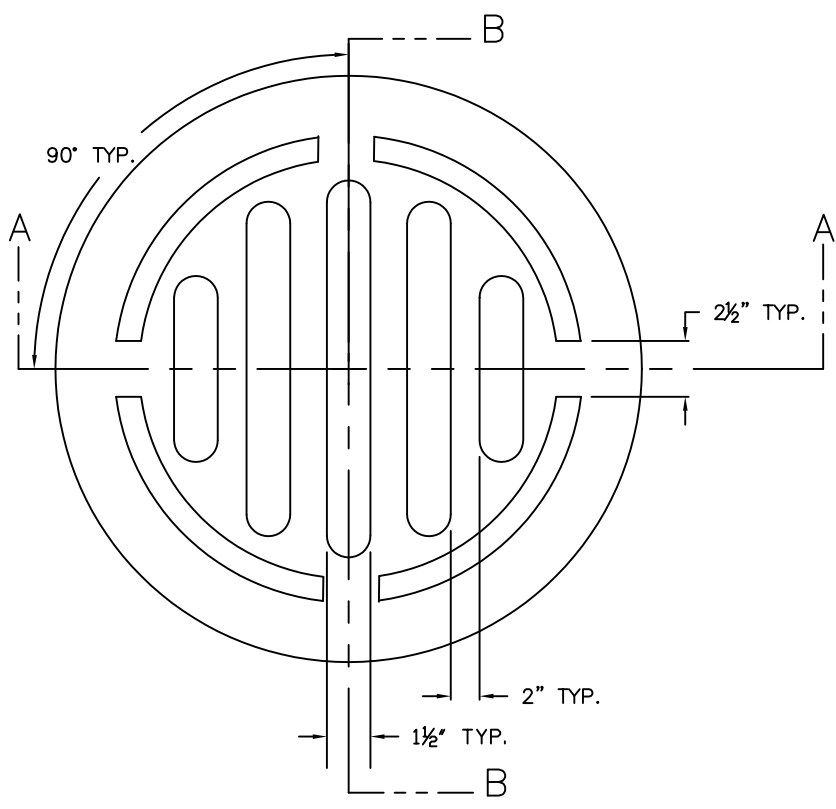
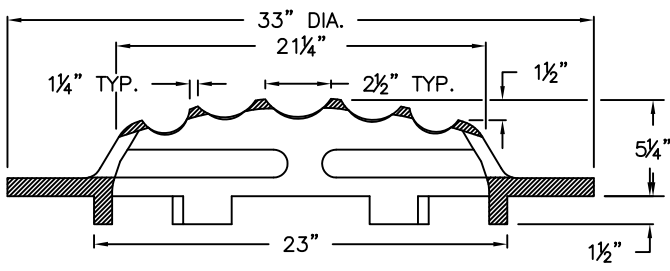


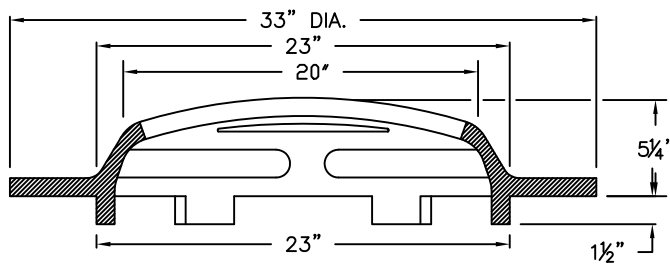
# STANDARD DESIGN GRATE, TYPE 8, SPECIAL #2



**PLAN**



**SECTION A-A**



**SECTION B-B**

**NOTES:**

1. THE CAST GRATE MAY BE MADE OF EITHER GRAY IRON OR DUCTILE IRON.
2. DUCTILE IRON CASTING SHALL BE GRADED 65-45-12.
3. TO BE USED IN ALL UNPAVED RESIDENTIAL AREAS OR AS SPECIFIED.

CITY OF DECATUR, ILLINOIS  
DEPARTMENT OF ENGINEERING  
INFRASTRUCTURE

ADOPTED JANUARY 1, 2003

DIRECTOR OF ENGINEERING & INFRASTRUCTURE

ISSUED:	
REVISIONS BY	DATE
KSG	10/2002

STANDARD #3045

K:\CVCEngineers\eng-data\AUTOCAD\STANDARD\Standards 2003\Std3045.dwg Wed, 30 Apr 2003 - 10:47am