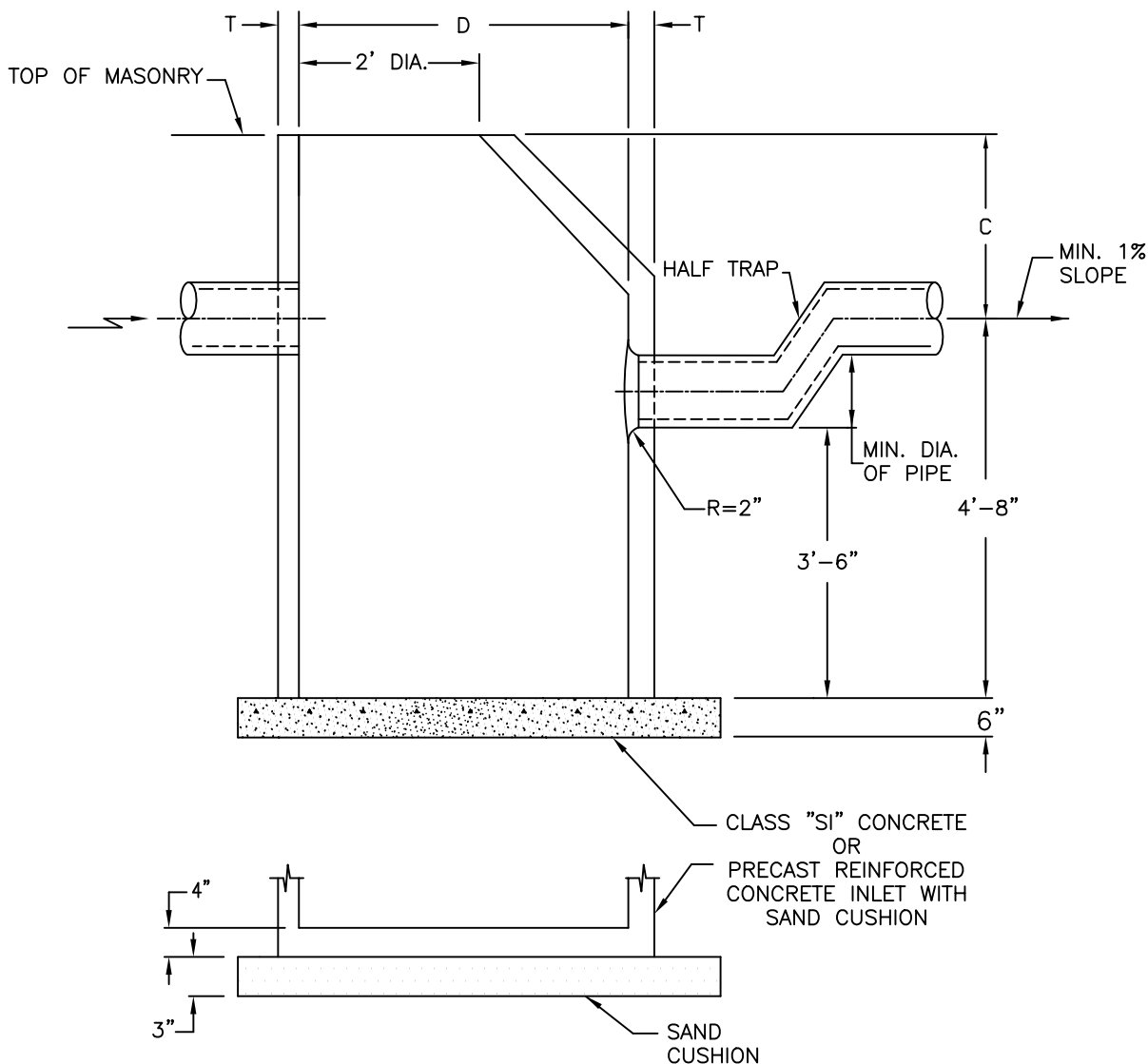


# STANDARD DESIGN CATCH BASIN TYPE A



## ELEVATIONS

DIAMETER OF MAIN SEWER	D
18" AND UNDER	4'-0"
21" TO 42" INCLUSIVE	5'-0"

ALTERNATE MATERIALS FOR WALLS	D	C	T (MIN.)
PRECAST REINFORCED CONCRETE RISERS	4'-0"	2'-6"	4"
	5'-0"	3'-9"	5"
MONOLITHIC CONCRETE	4'-0"	2'-6"	6"
	5'-0"	3'-9"	6"

### NOTES:

1. WHEN USING PRECAST REINFORCED CONCRETE RISERS, DIMENSION "C" MAY VARY FROM THAT GIVEN TO PLUS 6 INCHES.
2. HALF TRAP REQUIRED IF OUTLET IS TO A COMBINATION SEWER SYSTEM.
3. ALL MASONRY JOINTS IN THE STRUCTURE SHALL BE SEALED USING PERMAGUM ROPE MASTIC OR APPROVED EQUIVALENT. ADJUSTING RINGS AND THE CASTING SHALL BE SEALED USING 2 LOOPS OF 3/4" PERMAGUM ROPE MASTIC.

CITY OF DECATUR, ILLINOIS  
DEPARTMENT OF ENGINEERING  
& INFRASTRUCTURE

ADOPTED JANUARY 1, 2003

DIRECTOR OF ENGINEERING & INFRASTRUCTURE

ISSUED:	
REVISIONS BY	DATE
KSG	10/2002

STANDARD#3010