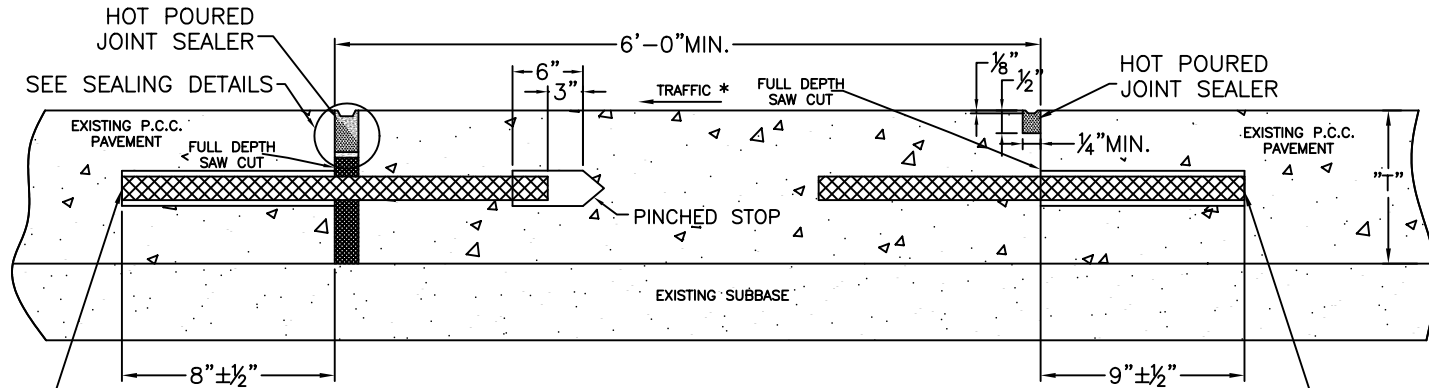


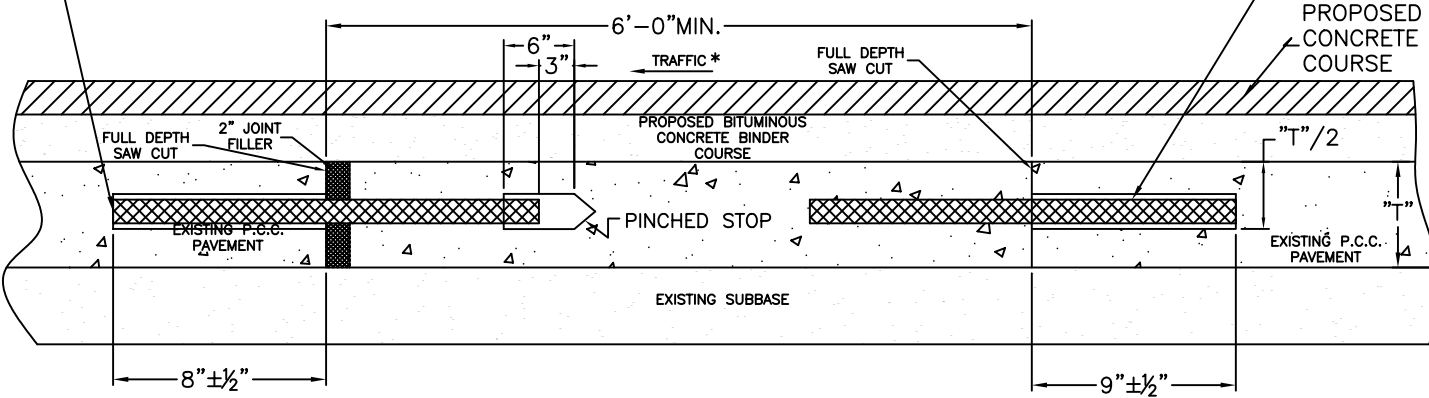
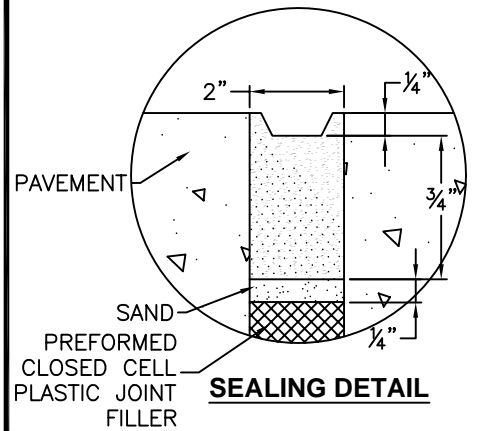
STANDARD DESIGN FOR CLASS B PATCH EXPANSION JOINT



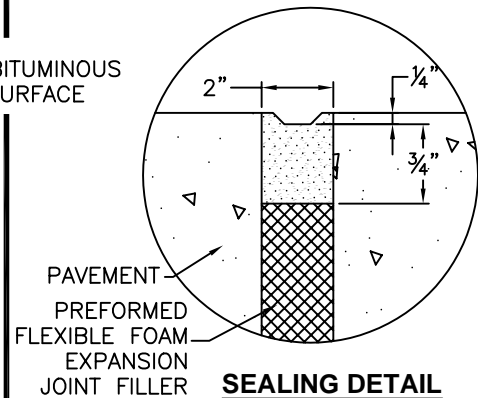
METHOD I
(WITHOUT RESURFACING)

1 1/2" x 18" LONG
EPOXY COATED
DOWELBARS ANCHORED
INTO EXISTING PAVEMENT
AT 12" CENTERS.

No. 10 x 18" LONG
DEFORMED BARS
ANCHORED INTO
EXISTING PAVEMENT
AT 12" CENTERS.



METHOD II
(WITH RESURFACING)



* WHEN RE-ESTABLISHING AN EXPANSION JOINT ON A TWO-LANE, TWO-WAY ROAD, REVERSE THE ORIENTATION OF THE DOWEL BARS WITH RESPECT TO TRAFFIC FOR ONE OF THE PATCHES SUCH THAT THE JOINT WILL BE CONTINUOUS ACROSS BOTH LANES.

CITY OF DECATUR, ILLINOIS DEPARTMENT OF ENGINEERING & INFRASTRUCTURE	ISSUED: 1/1/03	
	REVISIONS BY	DATE
ADOPTED JANUARY 1, 2003	KSG	10/2002
DIRECTOR OF ENGINEERING & INFRASTRUCTURE		